



OPERATIONAL RESEARCH SOCIETY OF INDIA



**BIMTECH**  
BIRLA INSTITUTE  
OF MANAGEMENT TECHNOLOGY

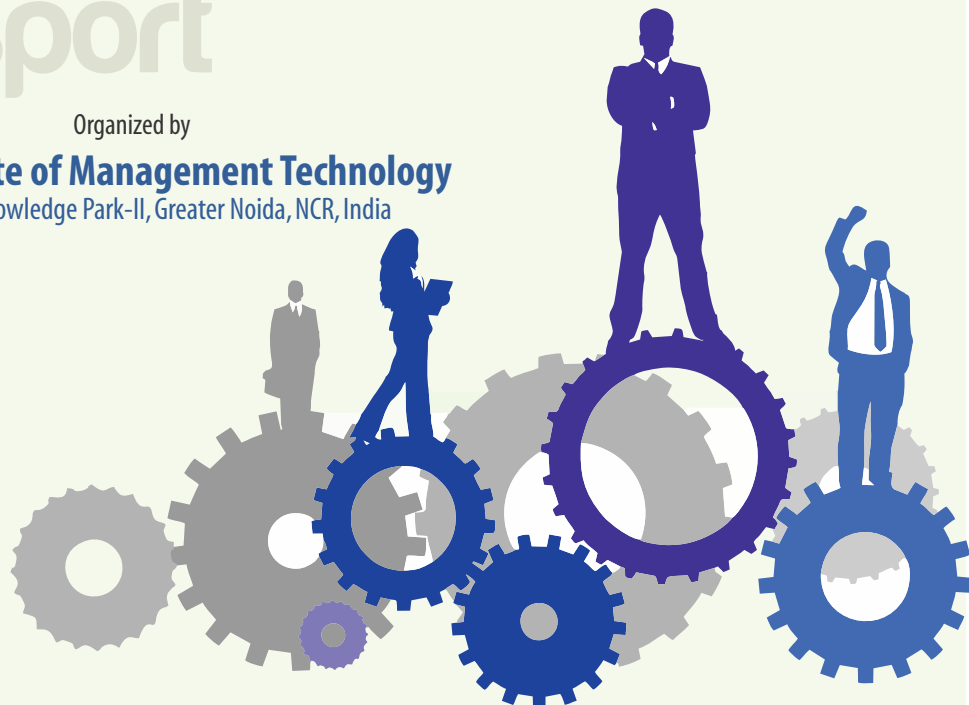
49<sup>th</sup>

**ANNUAL CONVENTION OF THE  
OPERATIONAL RESEARCH SOCIETY OF INDIA, &  
International Conference on Analytics in Operational Research**  
12 – 14 December, 2016

business management  
health economics  
education management  
defense  
infrastructure  
manufacturing  
agriculture  
transport

Organized by

**Birla Institute of Management Technology**  
Plot No.5, Knowledge Park-II, Greater Noida, NCR, India



# 49<sup>th</sup>

## ANNUAL CONVENTION OF THE OPERATIONAL RESEARCH SOCIETY OF INDIA, and International Conference on Analytics in Operational Research 12 – 14 December, 2016

### Operational Research Society of India

The Operational Research Society of India was founded in 1957 to provide a forum for the Operational Research Scientists to widen their horizon by exchange of knowledge and application of techniques from within the country. To further that end, the Society is affiliated to the International Federation of Operational Research Societies (IFORS).

The objectives of the society are promotion and propagation of knowledge in Operational Research, publication of a journal with original, high quality and state-of-the-art papers on Operational Research and allied disciplines, and conducting courses/ examinations to propagate knowledge in Operational Research.

#### Theme: Analytics in Operational Research

Paper Presentations at the conference will be organized in parallel sessions within the thematic streams. Extended abstracts of research papers focussed on theory and real world applications are invited for the following (not limited to) thematic streams. All submitted abstracts will be assessed by the respective stream chairs and reviewers.

##### Application

- Business Management
- Education Management
- Infrastructure
- Manufacturing
- Transport
- Defense and Security
- Applied Economics i.e., Health, Experimental Economics etc.
- Public System
- Agriculture
- Financial Management and Others

##### Theory

- Simulation
- Optimisation
- Forecasting
- Risk Analysis
- Data Mining
- Data Modeling
- Predictive Modeling
- Supply Chain Management
- Reliability
- Portfolio Analysis and Others



## ORSI has instituted the following awards:

- Best Paper Award (Theory)
- Best Paper Award (Application)
- Best Student Paper Award
- Best Doctoral Dissertation Award

## Registration Fees for the Conference

Participants	ORSI Member	Non Member	Late fee (After 21.11.16)
Academics	₹ 4000	₹ 5000	₹ 500
Industry	₹ 5000	₹ 6000	₹ 500
Students	₹ 2000	₹ 2000	₹ 500
Foreign	\$250	\$300	\$50

Service tax as applicable

## Tutorial on Data Envelopment Analysis

A full day tutorial on Data Envelopment Analysis will be conducted on 11th December 2016. The registration fee for the tutorial is as follows:

- For Indian participants Rs. 1000
- For foreign participants \$100

## Accommodation

BIMTECH offers accommodation for students at a nominal charge of Rs 500/-pp/per day on twin sharing basis (including meals). Accommodation for Delegates can be arranged, close to the conference venue, on payment basis.

## Programme Committee

**Ana Lopes**  
Professor, UFMG Brazil

**Anu G. Agarwal**  
Professor, University of Delhi

**Arnab Laha**  
Professor, IIM Ahmedabad

**V. Arunachalam**  
Professor, Universidad Nacional de Colombia

**B. Krishnakumar**  
Professor, Anna University

**B. S. Panda**  
Professor, IIT Delhi

**Bijaya K. Mangaraj**  
Professor, XLRI Jamshedpur

**B. K. Mohanty**  
Professor, IIM Lucknow

**Bodhibrata Nag**  
Professor, IIM Calcutta

**C. B. Gupta**  
Professor, BITS Pilani

**Deepa Sinha**  
Professor, SAU

**G. Raghuram**  
Professor, IIM Ahmedabad

**Gautam Dutta**  
Professor, IIM Ahmedabad

**Godwin Mjema**  
Former Rector, IFM Dar Es Salaam

**Jamal Farooqui**  
Professor, Aligarh Muslim University

**K. S. Mallikarjun Rao**  
Professor, IIT Mumbai

**Neeraj Hatekar**  
Professor, Mumbai University

**Niladri Chatterjee**  
Professor, IIT Delhi

**Pankaj Priya**  
Professor, BIMTECH

**R. N. Subudhi**  
Professor, KIIT Bhubaneswar

**R. Sudhesh**  
Professor, BIT Campus Tiruchirapalli

**Rajshekhhar Reddy P.**  
Professor, SVU Tirupati

**R. B. Lenin**  
Professor, University of Central Arkansas

**S. Nanda**  
Former VC, NOU Odisha

**Sanjeet Singh**  
Professor, IIM Calcutta

**S. P. Yadav**  
Professor, IIT Roorkee

**Umesh Gupta**  
Professor, IIT Kharagpur

**Amit Sharma**  
Professor, BIMTECH

**A. P. Das**  
Professor, PMI NTPC Ltd., Noida

**S. C. Malik**  
Professor, MDU, Rohtak

**S. Pattnaik**  
Professor, SOA, Bhubaneswar

**Vidyottama Jain**  
Professor, Central University of Rajasthan

business management  
health economics  
education management  
defense and security  
infrastructure  
public system  
manufacturing  
agriculture  
transport

## Important Dates

**Submission of extended abstract**  
17 Sept, 2016

**Notification of acceptance**  
30 Sept, 2016

**Submission of full paper**  
29 Oct, 2016

**Registration deadline:**  
21 Nov, 2016

## Advisory Committee:

**Arabinda Tripathy**  
Former National President, ORSI

**M. R. Rao**  
Provost, Woxsen School of Business, Hyderabad

**D. K. Banwet**  
Vice Chancellor, UEM, Kolkata

**H. Chaturvedi**  
Director, BIMTECH

**Suresh Chandra**  
Professor Emeritus, IIT Delhi

**Shri Prakash**  
Professor of Eminence, BIMTECH

**B. K. Dass**  
Professor, University of Delhi

## Organising Committee:-

**G. N. Patel**  
Chairman

**A. K. Chattopadhyay**  
President, ORSI

**Vijay Chandru**  
Chairman, Strand Life Science

**Anupam Varma**  
Dean (Academics), BIMTECH

**A. K. Dey**  
Professor, BIMTECH

**S. Dharmaraja**  
Professor, IIT Delhi

**C. S. Lalitha**  
Professor, University of Delhi

**B. B. Das**  
Commodore (Retd.), Indian Navy

**Arun Jain**  
Director, A&S Software

**Pankaj Gupta**  
Professor, University of Delhi

**M. P. Gupta**  
Professor, DMS, IIT Delhi

**C. K. Jaggi**  
Professor, University of Delhi

**J. K. Sharma**  
Former Professor, FMS, University of Delhi

**A. K. Saini**  
Professor, GGSIPU, New Delhi

**A. Bose**  
Professor, BIMTECH

**M. N. Hoda**  
Director, Bharati Vidyapeeth, New Delhi





TajMahal



Qutubminar



Akshardham

## Birla Institute of Management Technology

The Birla Institute of Management Technology (BIMTECH) was established in 1988 under the aegis of the Birla Academy of Art and Culture. The Institute is supported by the B. K. Birla Group of institutions. Our fully residential campus is located in Greater Noida, in the National Capital Region (NCR).

BIMTECH offers two year AICTE (Ministry of HRD, Government of India) approved post-graduate courses in general management (PGDM, General Management), international business (PGDM, International Business), insurance business (PGDM, Insurance Business Management), and retail management (PGDM, Retail Management). The Centre for Research Studies conducts doctoral and Fellow programmes. It has been one of the earliest centres of its kind in private business schools in the country. BIMTECH has been ranked in top 10 private business school of India in Business Today – AC Nielsen Survey, CNBC and MBAUniverse.com.

BIMTECH is also accredited by NBA (National Board of Accreditation) with highest quality. BIMTECH has 54 international academic and research partners including Maryland University, University of Nebraska, George Mason University, Philadelphia University, Frankfurt School of Finance and Management, KEDGE Business School, IESEG, FH Joanneum, Rouen Business School, Kozminski University, Jyväskylä University of Applied Sciences, Hertfordshire University, Hull University, Brock University, Asian Institute of Technology to name a few.

**For all enquires (including those pertaining to abstracts/full paper submission) contact**

**Dr. G.N. Patel / Dr. A.K. Dey**

Professors in Operations & Decision Sciences  
Birla Institute of Management Technology  
gn.patel@bimtech.ac.in / ak.dey@bimtech.ac.in

For details log on to **www.bimtech.ac.in**  
Conference E-mail: orsi@bimtech.ac.in



Plot No. 5, Knowledge Park II  
Institutional Area, Greater Noida (NCR)  
Uttar Pradesh 201 306, India  
Tel: +91-120-2323001-10  
Fax: +91-120-2323022/25  
**website: www.bimtech.ac.in**

